



## Pressure regulating valve

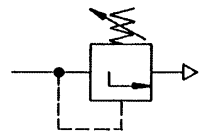
Size 0

Water applications

G 1/4

**484.03 to 484.10**

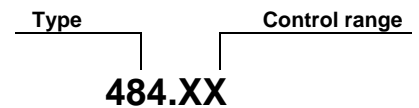
0.1 to 3.0 bar  
0.2 to 6.0 bar  
0.5 to 10.0 bar  
0.5 to 16.0 bar\*



### Characteristics

<b>Type</b>	<b>484.XX</b>
<b>Port</b>	<b>G 1/4 (G 1/8 on request)</b>
<b>Pressure gauge port</b>	<b>G 1/8</b>
<b>Medium</b>	<b>Water, compressed air, non-corrosive gases</b>
<b>Type of construction</b>	Diaphragm pressure regulator with <b>non-self-relieving design</b>
<b>Mounting position</b>	Any
<b>Input pressure p<sub>1</sub></b>	<b>Max. 25 bar</b>
<b>Control range p<sub>2</sub></b>	<b>0.1 to 3.0 bar, 0.2 to 6.0 bar, 0.5 to 10.0 bar 0.5 to 16.0 bar* on request</b>
<b>Temperature Ambient / medium</b>	<b>Max. 50°C</b>
<b>Mounting type</b>	In-line, bracket kit Panel mounting, cutout Ø30.5
<b>Weight [g]</b>	200

### Ordering information



Output pressure	
XX=	Control range
03	0.1 to 3.0 bar
06	0.2 to 6.0 bar
10	0.5 to 10.0 bar
--	0.5 to 16.0 bar*

### Operation

- Push-to-lock adjusting knob Bar
- Pressure gauge included

### Materials

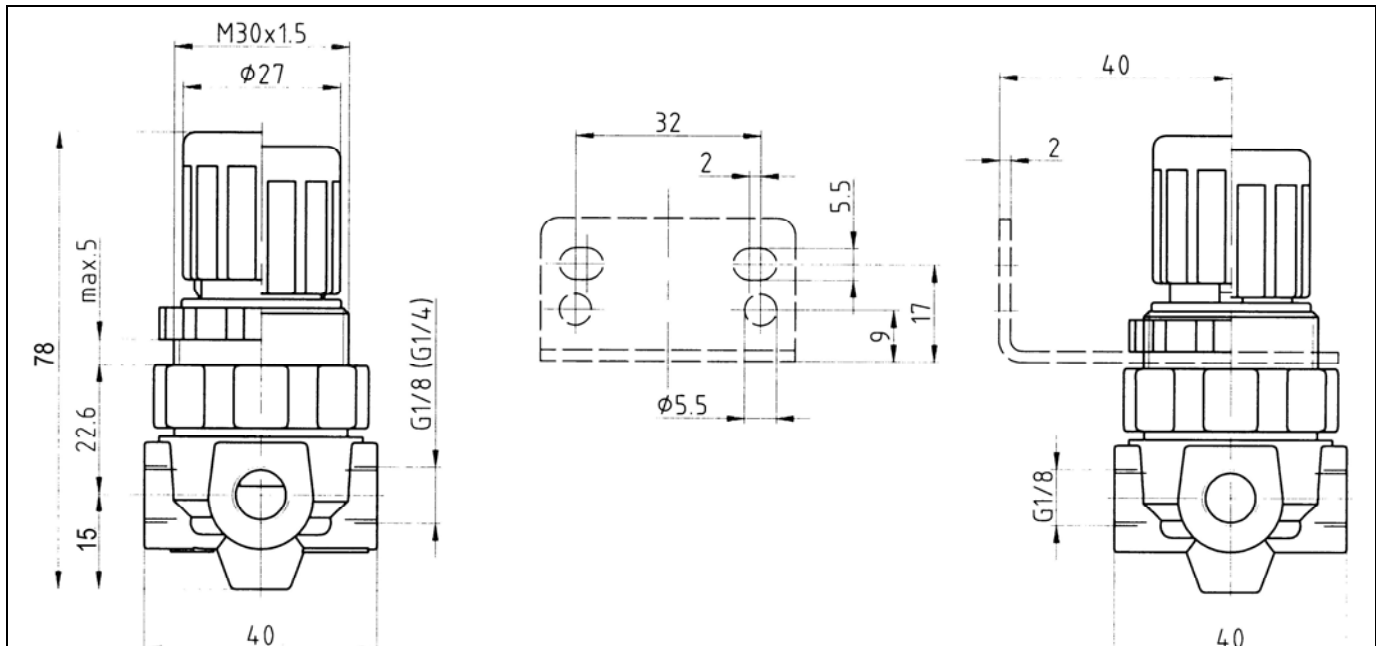
Designation	Material
Head piece	Brass
Spring bonnet	POM-brass
Diaphragm	NBR-brass
Valve cone	NBR-brass
Valve seat	Brass
Pressure spring	Galvanised steel
O-ring 9.5 x 1.6	NBR
Counter-pressure spring	Stainless steel

### Applications

All applications where a given water pressure must be adapted to a specific application.

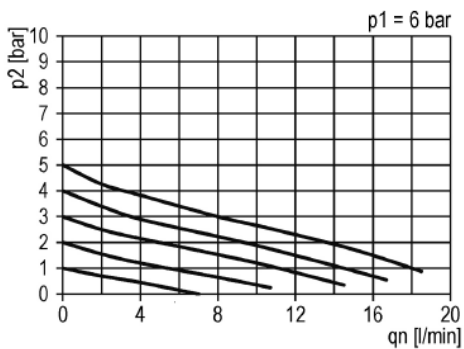
**A filter should always be connected upstream**

## Dimensions [mm]



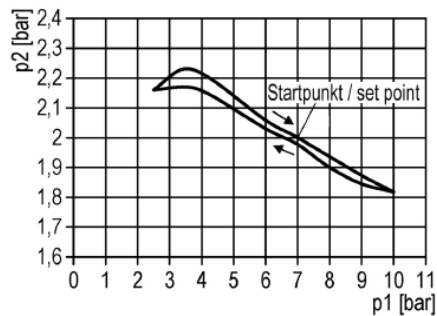
## Flow characteristic

Medium: Water



## Hysteresis

Medium: Water



## Accessories

Designation	Part No.
- Nut M 30 x 1.5	R 11-55
- Mounting bracket with nut R 11-55	MV 30

## Main spare parts

Designation	Part No.
Repair kit, compl. - Diaphragm - Valve cone - O-ring 9.5 x 1.6	22.484.4

## Applications with water

Scale or contaminated water cause malfunctions. Statutory warranty claims can only be accepted if the defect is the fault of the manufacturer.